

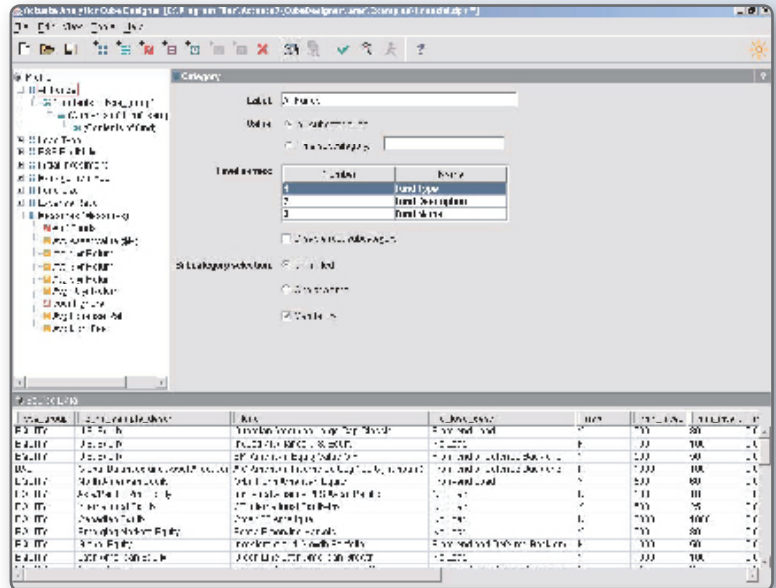
Overview

Actuate Analytics extends the Actuate Enterprise Reporting Application Platform by providing web-based Online Analytical Processing (OLAP) capabilities to power users, business analysts and management. Actuate Analytics empowers these users to interactively explore information, to build insightful, multi-dimensional reports and to facilitate good decisions while giving IT control over access to the underlying data sources. The Actuate Analytics Designer lets IT control access to the data and define the structure of each cube delivered by the Actuate iServer. Additionally, IT can seamlessly blend Analytics into existing Enterprise Reporting Applications and provide a branded, personalized end-user experience that requires no training.

Actuate Analytics has three components. IT or a data-knowledgeable power user uses the Actuate Analytics Cube Designer to define the multi-dimensional structure of a cube, point to the source data onto which it maps, define the categories and measures summarized in it and set defaults for the user interface experience.

The cube design, called the cube profile, is then published to the Actuate iServer. The iServer now includes Actuate Analytics Cube Factory, which generates highly-compressed, multi-dimensional Analytics cubes based on the definition provided in the cube profile. Like any other report definition in the iServer encyclopedia, a cube can be subscribed, scheduled, run and cached. In addition, cube reports are also saved with each cube.

Finally, the cube, its accompanying reports and the Actuate Analytics Viewer are sent to the power user's browser where they explore and analyze the data, using rich OLAP functionality to discover key insights to support their business decisions. As that user explores, they create additional snapshot reports that can be saved both locally and back to the iServer. These cube reports can then be shared with everyday information consumers allowing them to benefit quickly from the analysis.



Actuate Analytics Cube Designer:
Summary Screen

A Robust OLAP Experience

The Actuate Analytics Designer is delivered as a zero-footprint, 100%-Java solution requiring a minimal install on the desktop. It is capable of defining very robust OLAP cubes for power users. Analytics uses the Actuate iServer to manage user privileges, schedule cube generation, store reports, and provide a common interface to analysts and consumers alike. It supports multiple platforms and adheres to industry standards such as SOAP and JOLAP. Implementation time is quick and ongoing maintenance is minimal.

Seamlessly Ad Analytics to Enterprise Reporting Applications

Actuate Analytics adds power user support to the Actuate Enterprise Reporting Platform. This lets IT deliver comprehensive Enterprise Reporting Applications to users of all skill levels. Not only does Actuate Analytics have built-in capabilities to control the functional levels of the interface, but also it supports custom color and display formats.

IT can go further, offering personalized data segmentation, parameter driven cube definition, and on-demand or cached cube generation. The result to end-users is an OLAP-based Enterprise Reporting Application that tailors both data and functionality to the needs of each user. Users spend less researching information and more time acting upon it.

Features and Benefits

A Robust OLAP Experience

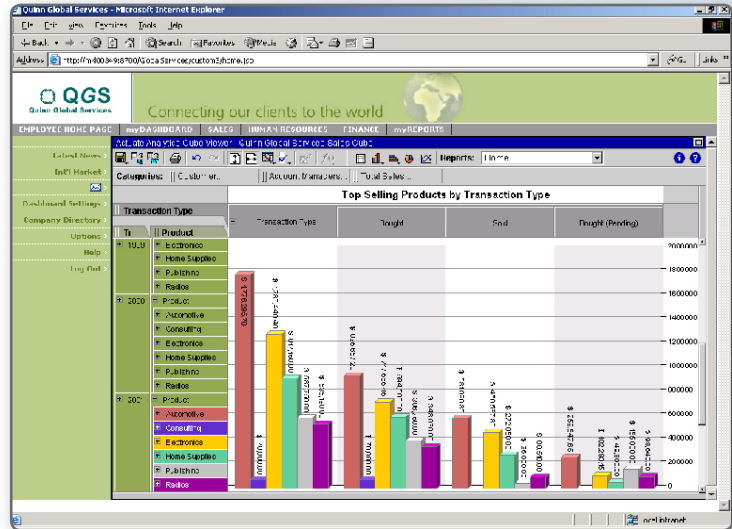
- *The Analytics Designer*
- *Robust Cube Definition*
- *Relative Time Periods*
- *Microsoft Analysis Services*

Actuate Analytics Designer — The Actuate Analytics Designer is a Java application used to create the definition of a cube, called a profile. A cube profile contains the source data location, query and structure definitions and mappings to categories, and measures to be created in the cube. The Cube Designer includes an easy-to-use query editor to retrieve information from relational data sources. The editor includes drag-and-drop table and column manipulation, parameterization, direct SQL access, and data preview capabilities.

Once a sample of the source data is provided, IT then defines the hierarchical structure of the categories, adds transformations, calculated measures and measure summaries, and establishes the formats for values, colors, and the presentation of the cube. The Analytics Designer can also build a cube directly, allowing designers to rapidly prototype and test their solutions, reducing development time and costs.

Robust Cube Definition — The Analytics Designer allows IT to control the construction of what gets delivered in a cube, and can greatly enhance the usability of the data. The Analytics Designer can:

- *Extract source data from files, databases, XML or applications*
- *Sort categories and measures automatically*
- *Drag and drop hierarchy and measure definitions*



- *Define dimensional hierarchies and relationships within data (including ragged and unbalanced)*
- *Enrich the cube with custom transformations and field decompositions*
- *Personalize access to each cube*
- *Establish default interface to each cube, including colors and formats*
- *Select or customize relative time periods to match business model*

Relative Time Periods—Create reports such as Fiscal Year to Date and subset data using relative time periods. Define the selection once (e.g. current month) and apply it, independent of changes in the report.

Microsoft Analysis Services—The Actuate Analytics Viewer connects over the network to cubes defined with Microsoft® SQL Server Analysis Services. Access is provided using Microsoft’s OLE DB for OLAP (ODBO) standard, and is governed by a profile specific to Analysis Services. Organizations can use this capability to create very large cubes that summarize large volumes of information, across many dimensions and measures. This feature is limited to the Microsoft Windows platform.

Add to Enterprise Reporting Applications

The Actuate Analytics Designer also offers IT the ability to deliver an integrated application experience across the Enterprise Reporting Application platform by supporting the following application features:

- URL Hyperlink Extensibility
- Custom Business Logic
- Adaptive, Personalized Cubes
- Private Branding

URL Extensibility—IT can define hyperlinks to other cubes, Actuate reports and other web resources. Similar to ‘drill-to-detail’ capabilities in an Actuate report, a hyperlink on a cell within a cube will navigate the user between cubes, Actuate reports, spreadsheets and other web resources.

Custom Business Logic—Custom business logic can extend the functionality made available to users in the Analytics Viewer. The Analytics Designer can specify an action that will be performed when the users right-clicks on a data item. The action appears as a context menu selection and is often a URL to invoke a JSP or ASP application. Adaptive, Personalized Cubes—As a formatted text file, the cube profile can be populated with runtime variables or be created dynamically through JSP, ASP, or even an Actuate e.Report. This lets IT create a parameterized cube profile which will generate a personalized cube for each user, giving IT control over data access rights, security policy, cube size, and even the features exposed in the Analytics Viewer.

Extensible User Experience Levels—Pre-defined or customizable experience levels tailor the interface to the user’s skills or the application need. The default levels are Standard, Novice, and Advanced.

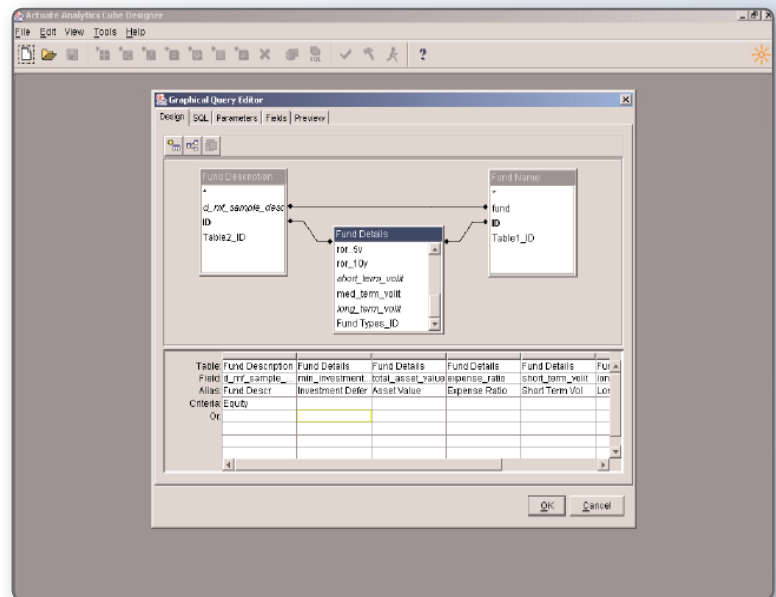
Private Branding—The Actuate Analytics supports private branding to meet an organization’s specific corporate and distribution requirements, or to integrate seamlessly into existing applications. Color schemes can be defined within the cube profile and the Analytics Cube Viewer can be branded to conform to corporate standards.

Technical Requirements

Actuate Designers are supported on the following operating systems:

- Microsoft Windows 2000
- XP Pro
- Server 2003 on Pentium III 450 or higher PCs with minimum RAM of 256 MB and free disk space of 100 MB

The technical requirements listed here are for guideline purposes only. Please consult Actuate Support Services for the precise requirements for your specific environment.



Actuate Analytics Cube Designer: Graphical Query Editor